



# Y5ZONE User Guide

**For Windows XP (Home / Professional) Users**  
(Using Windows XP Wireless Zero Configuration)

Version 1.0

# Y5ZONE User Guide

**For Windows XP (Home / Professional) Users**  
(Using Windows XP Wireless Zero Configuration)

Version 1.0

## Table of Contents



### Chapter 1 **Initial Setup**

- 1.1 Configure Wireless LAN Card
- 1.2 Disable Proxy Server Setting
- 1.3 Disable Pop-up Blocker



### Chapter 2 **Start Using Y5ZONE at Hotspots**

- 2.1 Select Wireless Network
- 2.2 Login Process
- 2.3 Login Status



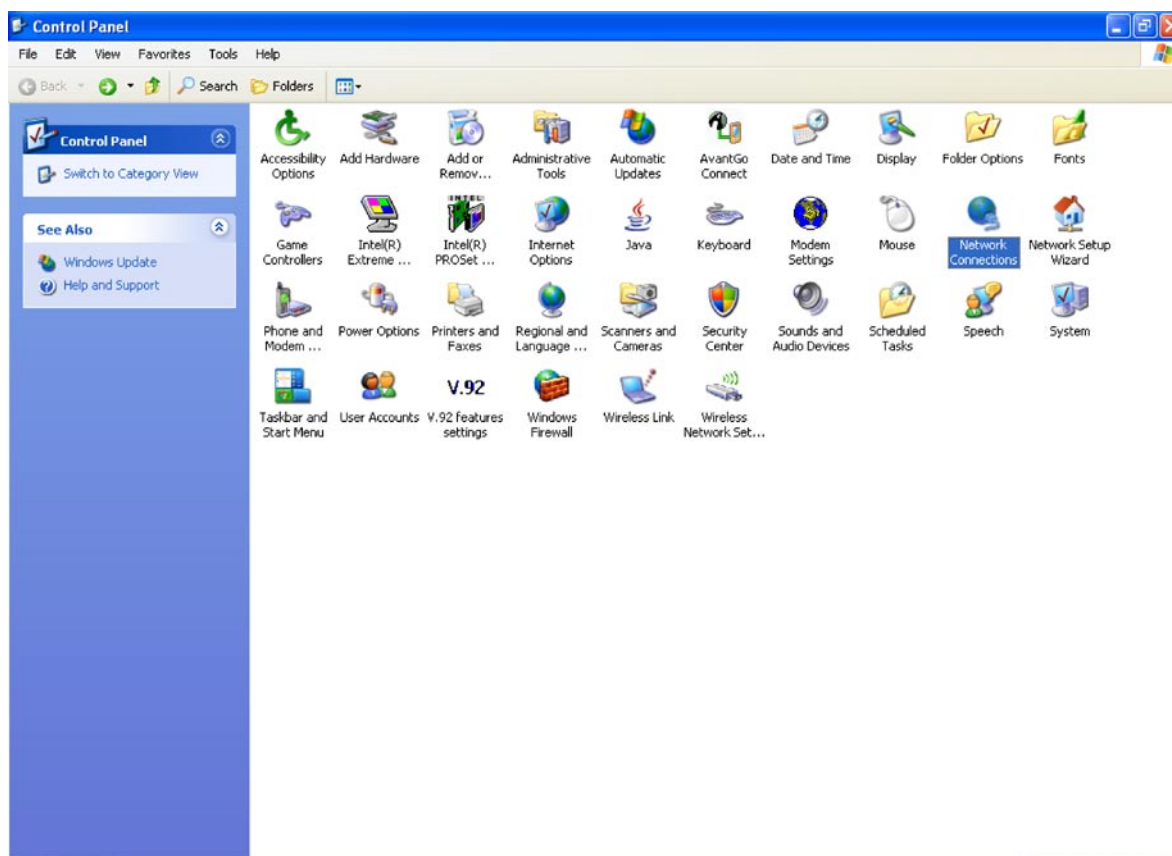
### Chapter 3 **Finish Using Y5ZONE Service**

## Chapter 1 Initial Setup

### 1.1 Configure Wireless LAN Card

Step 1 - Click "**Start**" to select "**Control Panel**".

Step 2 - Double click "**Network Connections**".

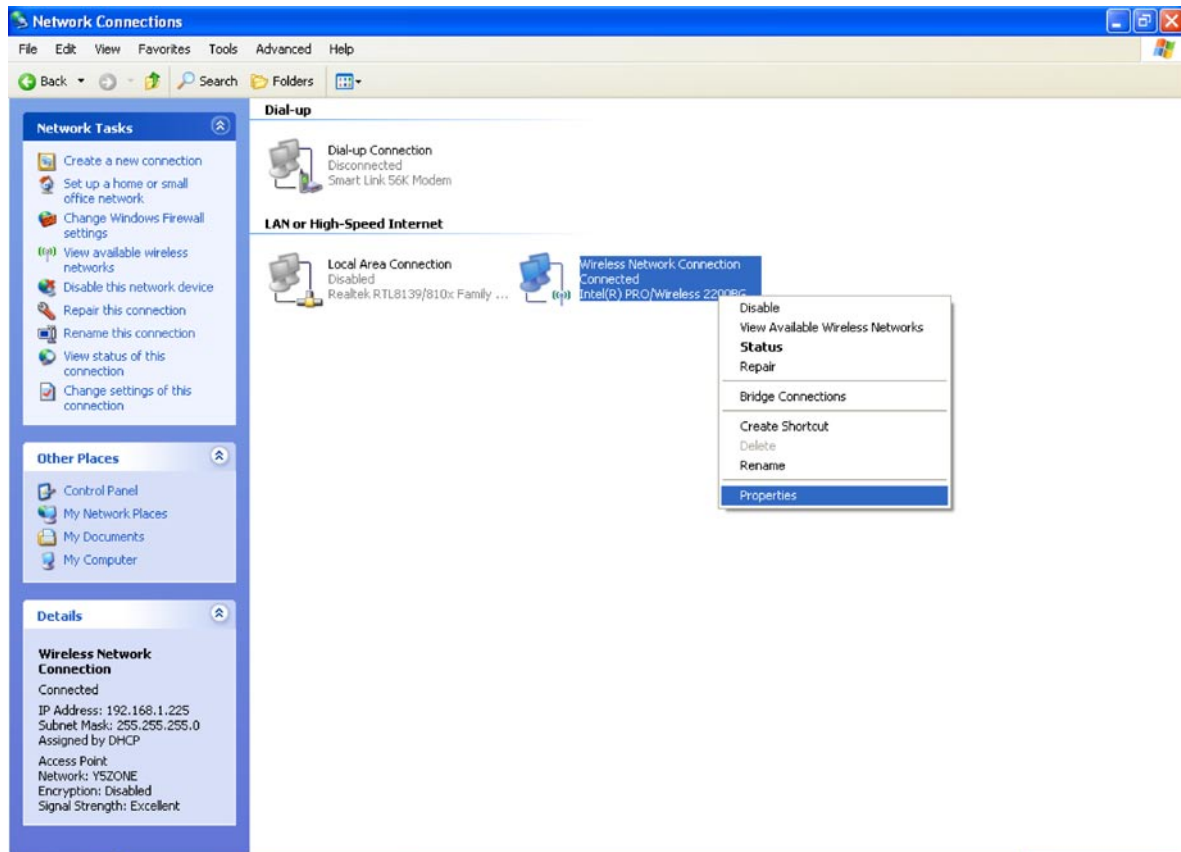


# Y5ZONE User Guide

For Windows XP (Home / Professional) Users  
(Using Windows XP Wireless Zero Configuration)

Version 1.0

- Step 3 - Right click "Wireless Network Connection" and select "Properties"

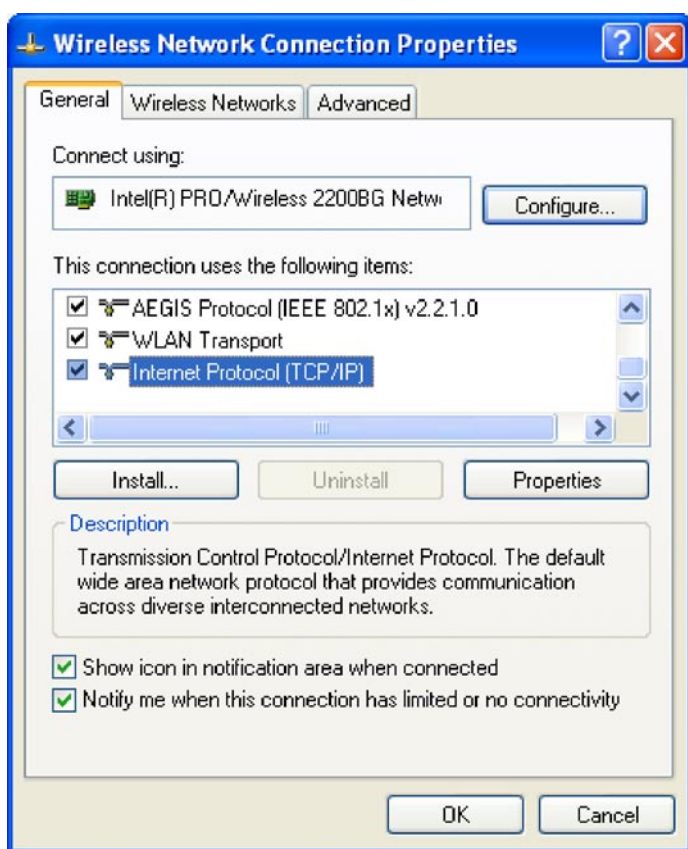


# Y5zone User Guide

**For Windows XP (Home / Professional) Users**  
(Using Windows XP Wireless Zero Configuration)

Version 1.0

- *Step 4* - Select the **“General”** tab
- *Step 5* - Select **“Internet Protocol (TCP/IP)”** from the network components box.
- *Step 6* - Click **“Properties”**.

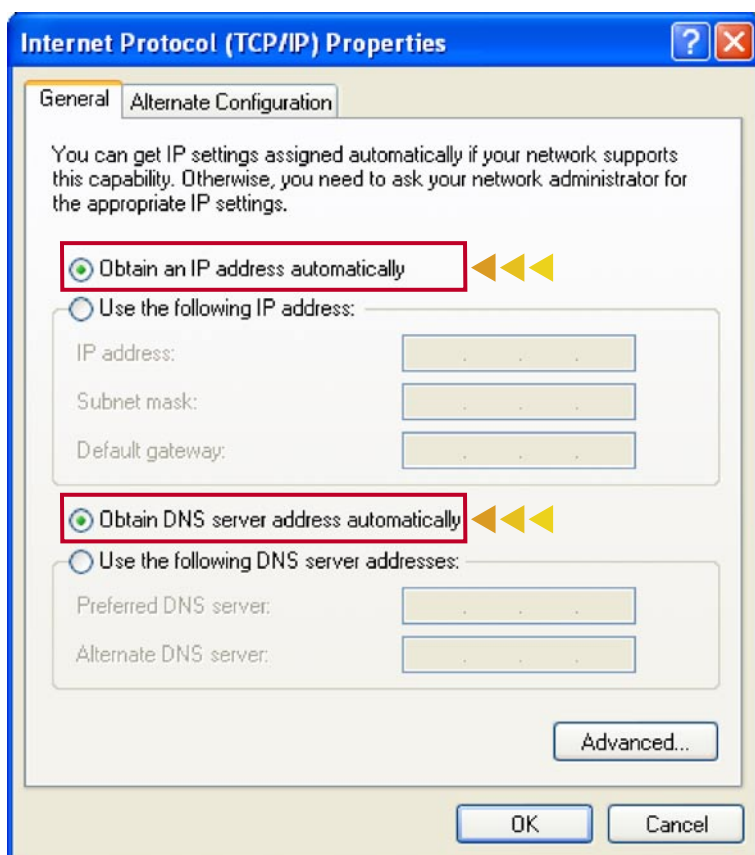


# Y5zone User Guide

**For Windows XP (Home / Professional) Users**  
(Using Windows XP Wireless Zero Configuration)

Version 1.0

- Step 7 - Below window will appear. Select **"Obtain an IP address automatically"** and **"Obtain DNS server address automatically"**\*



\* Note down the original settings (IP and DNS addresses), in case you would like to resume the settings in the future.

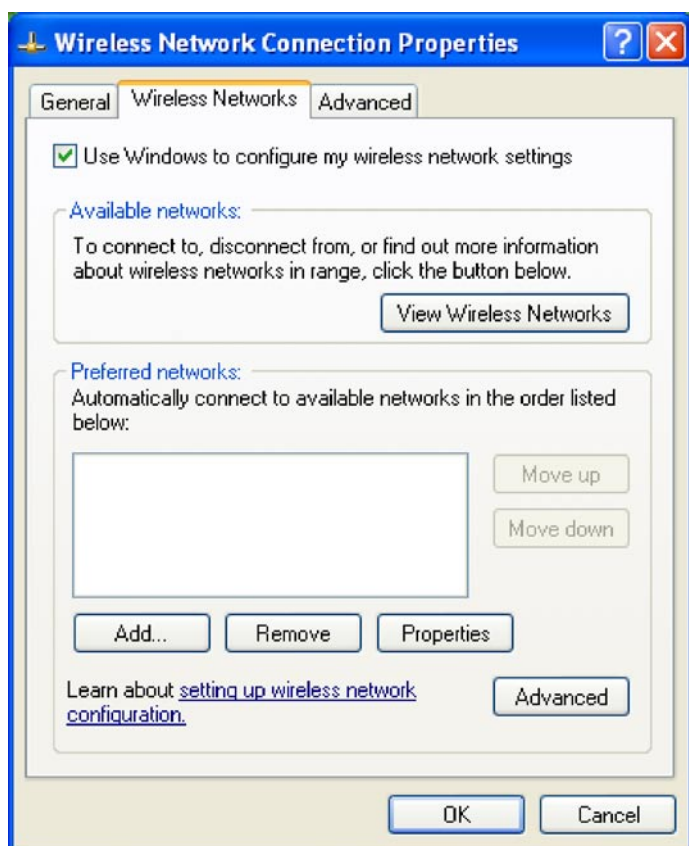
- Step 8 - Click **"OK"**

# Y5ZONE User Guide

**For Windows XP (Home / Professional) Users**  
(Using Windows XP Wireless Zero Configuration)

Version 1.0

- ❏ *Step 9* - Select the **“Wireless Networks”** tab
- ❏ *Step 10* - Check **“Use Windows to configure my wireless network settings”**
- ❏ *Step 11* - Select **“Add”** to add a new profile

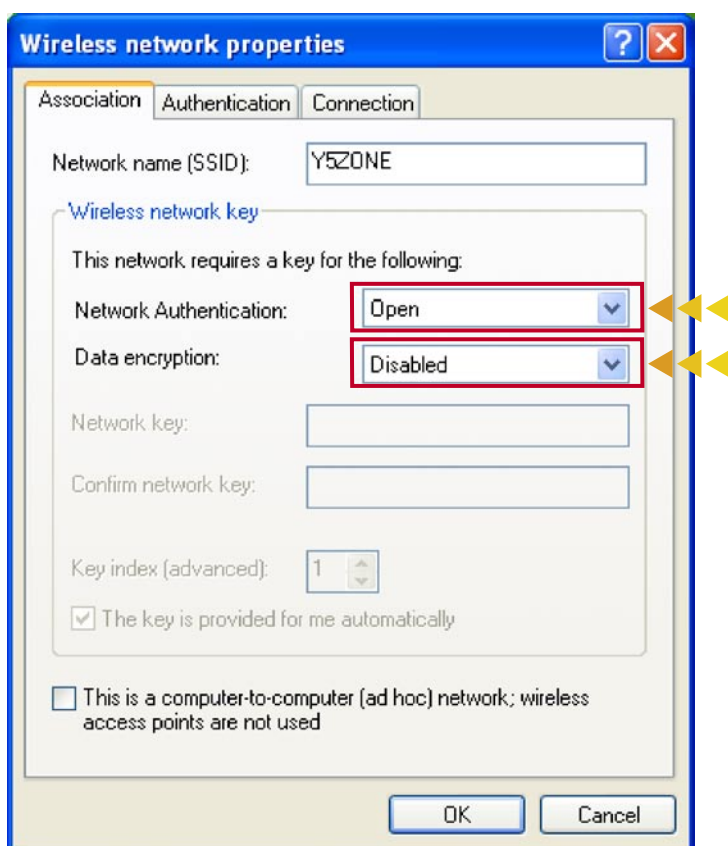


# Y5ZONE User Guide

**For Windows XP (Home / Professional) Users**  
(Using Windows XP Wireless Zero Configuration)

Version 1.0

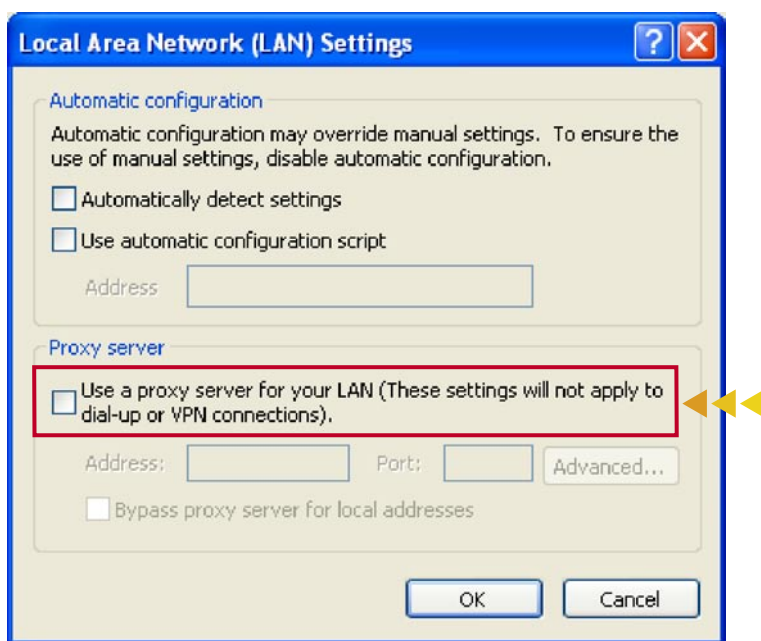
- ❖ *Step 12* - Type **"Y5ZONE"** in the "Network Name (SSID)" field (all capital letter without double quote)
- ❖ *Step 13* - Select **"Open"**.
- ❖ *Step 14* - Select **"Disabled"**.
- ❖ *Step 15* - Click **"OK"**





## 1.2 Disable Proxy Server Setting

- ❏ Step 1 - Launch a Microsoft Internet Explorer web browser
- ❏ Step 2 - Select **"Tools" ▶ "Internet Options" ▶ "Connections" ▶ "LAN Settings"**
- ❏ Step 3 - Uncheck the **"User a proxy server for your LAN"** checkbox.
- ❏ Step 4 - Click **"OK"**



# Y5ZONE User Guide

For Windows XP (Home / Professional) Users  
(Using Windows XP Wireless Zero Configuration)

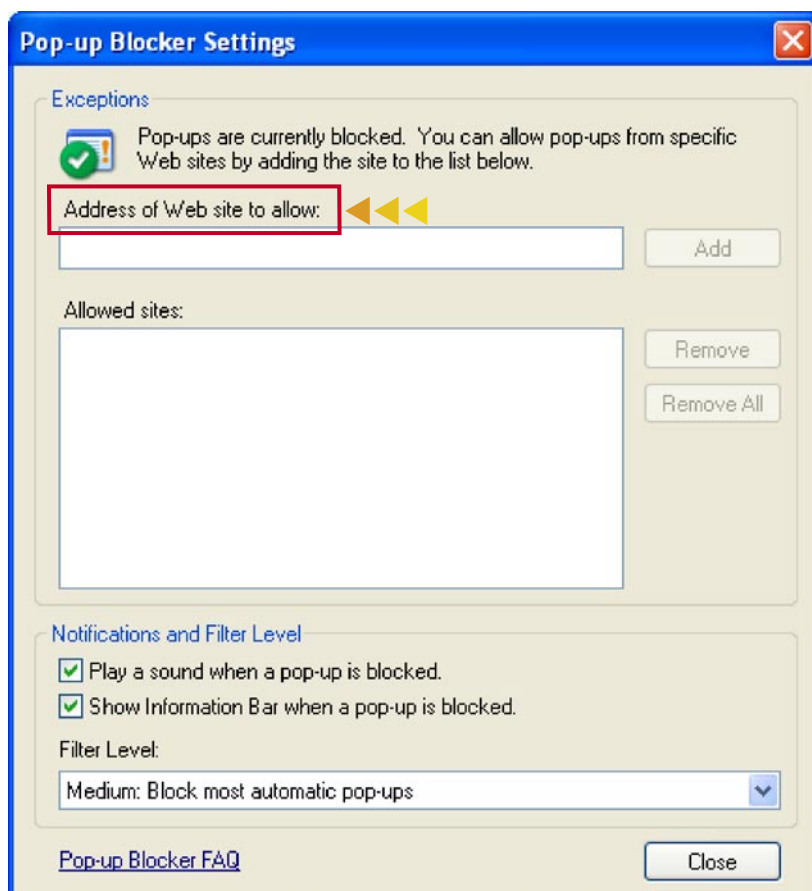
Version 1.0



## 1.3 Disable Pop-up Blocker

If using Window XP Service Pack 2 with pop-up blocker enabled, please follow the below steps to allow access to Y5ZONE login page.

- ❏ Step 1 - Select **"Tools"** ► **"Pop-up Blocker"** ► **"Pop-up Settings"**
- ❏ Step 2 - Type **"www.y5zone.net"** in the field circled in red and then click **"Add"**
- ❏ Step 3 - Type **"hotspot.status"** in the field circled in red and then click **"Add"**
- ❏ Step 4 - Click **"Close"**



# Y5ZONE User Guide

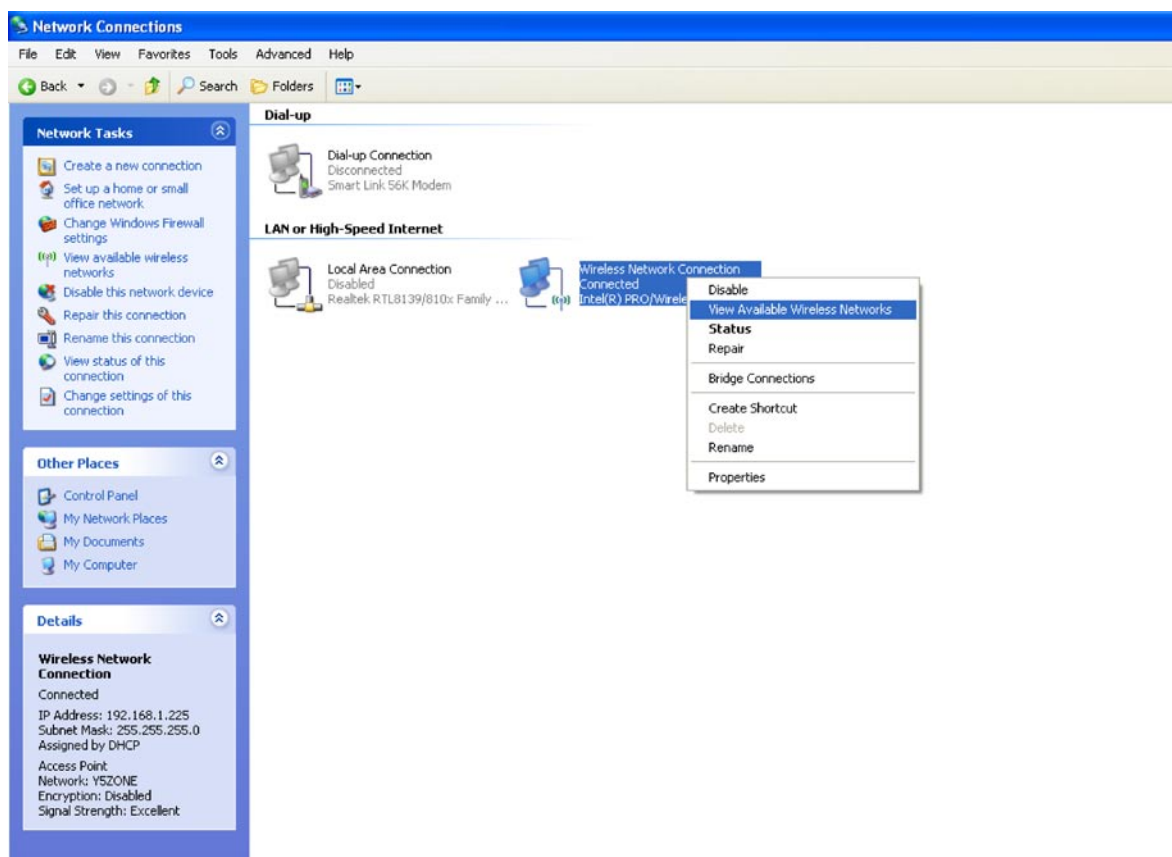
For Windows XP (Home / Professional) Users  
(Using Windows XP Wireless Zero Configuration)

Version 1.0

## Chapter 2 Start Using Y5ZONE at Hotspots

### 2.1 Select Wireless Network

- ❏ **Step 1** - Click **“Start”** to select **“Control Panel”**.
- ❏ **Step 2** - Double click **“Network Connections”**.
- ❏ **Step 3** - Right click **“Wireless Network Connection”** to select **“View Available Wireless Networks”**

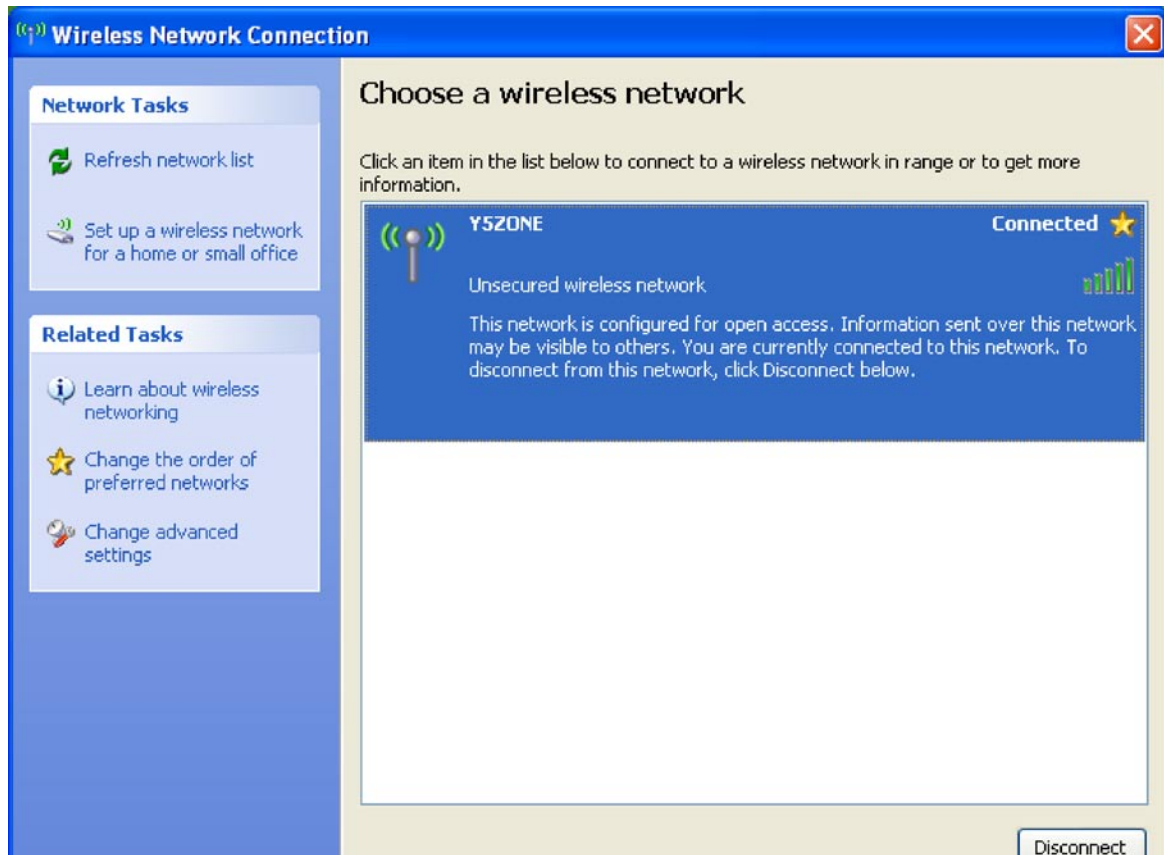


# Y5ZONE User Guide

**For Windows XP (Home / Professional) Users**  
(Using Windows XP Wireless Zero Configuration)

Version 1.0

- ▣ *Step 4* - Select Y5ZONE highlighted in blue.
- ▣ *Step 5* - Click **“Connect”**



# Y5ZONE User Guide

For Windows XP (Home / Professional) Users  
(Using Windows XP Wireless Zero Configuration)

Version 1.0



## 2.2 Login Process

- Step 1 - Launch the web browser and type in a valid Internet web site on the address field. You will be redirected to the Y5ZONE login page automatically.
- Step 2 - Enter your login ID and password
- Step 3 - Click "Submit"

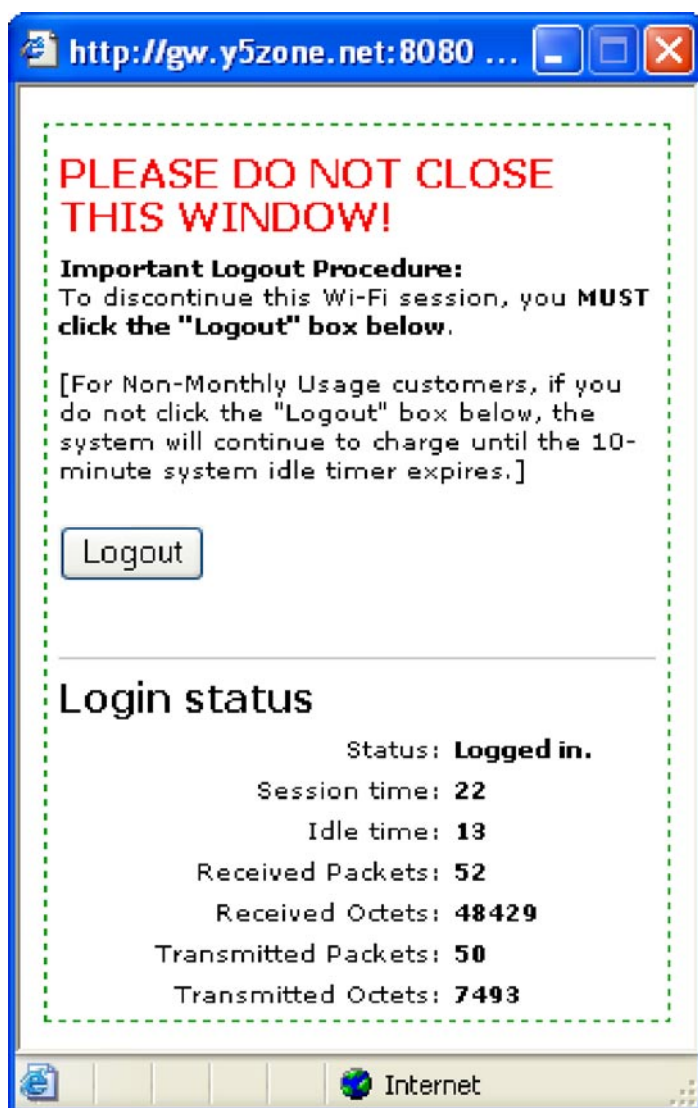




## 2.3 Login Status

### 2.3.1 Successful login

1. A login status pop-up window will appear which displays the current login and usage statistics. Please DO NOT close this pop-up window.
2. Original requested website will be shown and you may start using Y5ZONE wireless service.



# Y5zone User Guide

For Windows XP (Home / Professional) Users  
(Using Windows XP Wireless Zero Configuration)

Version 1.0

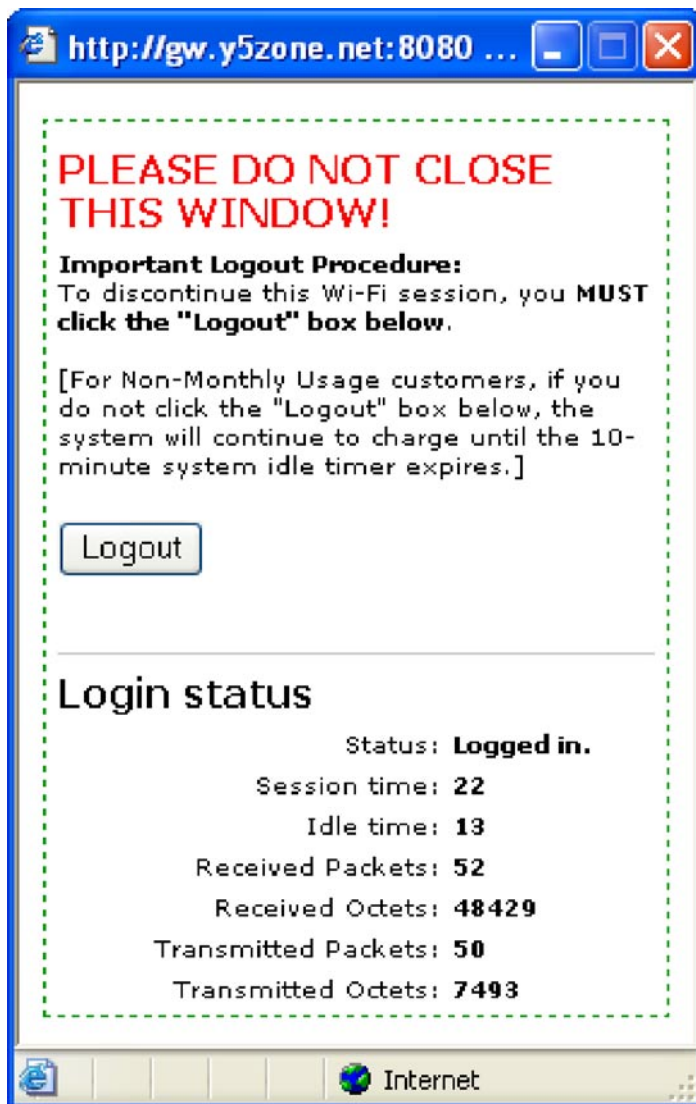
## 2.3.2 Login failure

In case of login failure, an error message is displayed under the login box as shown below.



## Chapter 3 Finish Using Y5ZONE Service

- ❖ Step 1 - Click and select the Login status pop-up window
- ❖ Step 2 - Click the "Logout" button to logout



Or

- ❖ Step 1 - Type "http://hotspot.status.y5zone.net:8080/session.asp" at the web browser
- ❖ Step 2 - Click the "Logout" button to logout