



# Y5ZONE User Guide

**For Pocket PC Users**

Version **1.0**

## Table of Contents



### Chapter 1 **Initial Setup**

1.1 Configure Wireless LAN Function

1.2 Disable Proxy Server Setting



### Chapter 2 **Start Using Y5ZONE at Hotspots**

2.1 Select Wireless Network

2.2 Login Process

2.3 Login Status

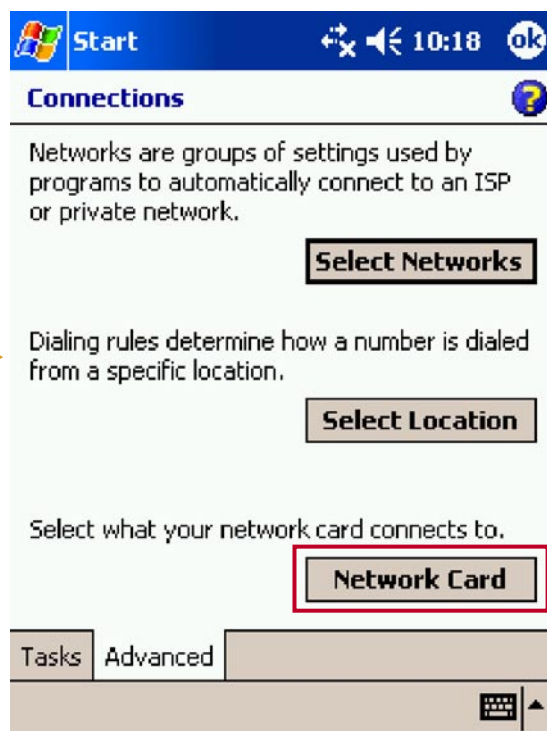
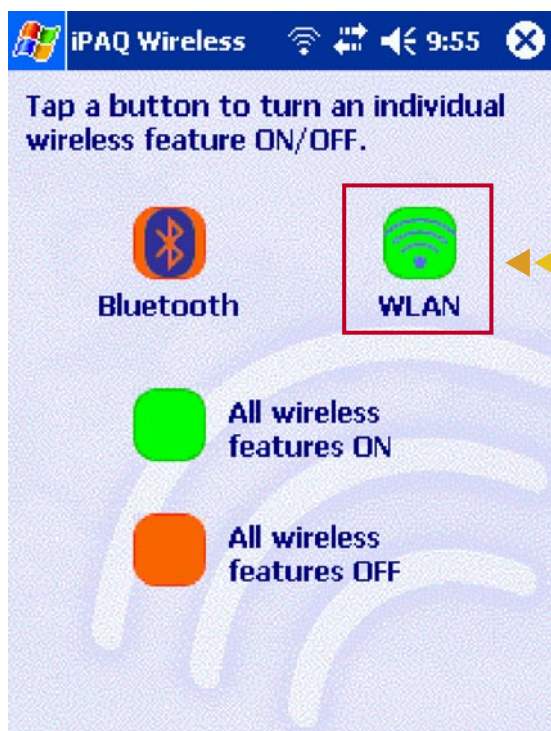


### Chapter 3 **Finish Using Y5ZONE Service**

## Chapter 1 Initial Setup

### 1.1 Configure Wireless LAN Card

- ❏ Step 1 - Tap "Start" to select "iPAQ Wireless"
- ❏ Step 2 - Tap "WLAN" icon to turn on WLAN function. (The icon will change to green if it is on.)
- ❏ Step 3 - Tap "Start" to select "Settings"
- ❏ Step 4 - "Connections" ► "Connections" ► Select "Advanced" tab ► "Network Card"

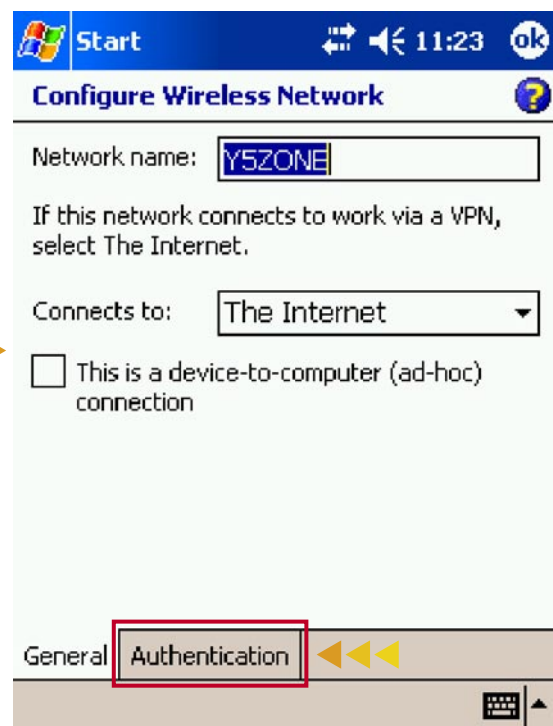
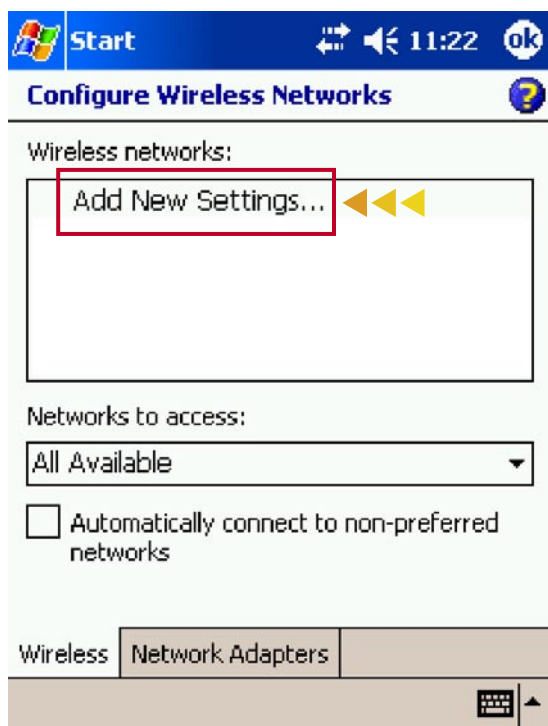


# Y5zone User Guide

For Pocket PC Users

Version 1.0

- Step 5 - Tap **"Add New Settings"** to add a new profile
- Step 6 - Type **"Y5ZONE"** (all capital letters without double quote) in the field of **"Network name"**.
- Step 7 - Tap **"Authentication"**.

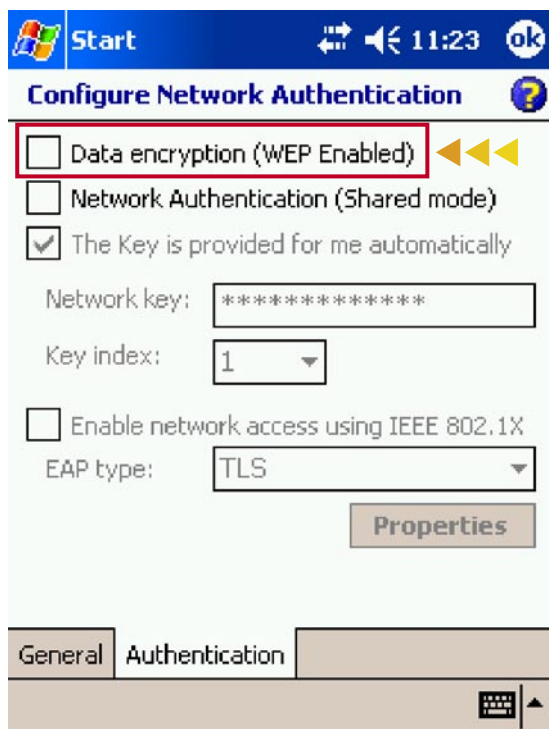


# Y5zone User Guide

For Pocket PC Users

Version 1.0

- Step 8 - Uncheck "Data encryption (WEP Enabled)" and tap "OK" at the top right hand corner.
- Step 9 - Select "Network Adaptors" tab
- Step 10 - Tap "iPAQ WLAN Wireless Adapter"



# Y5zone User Guide

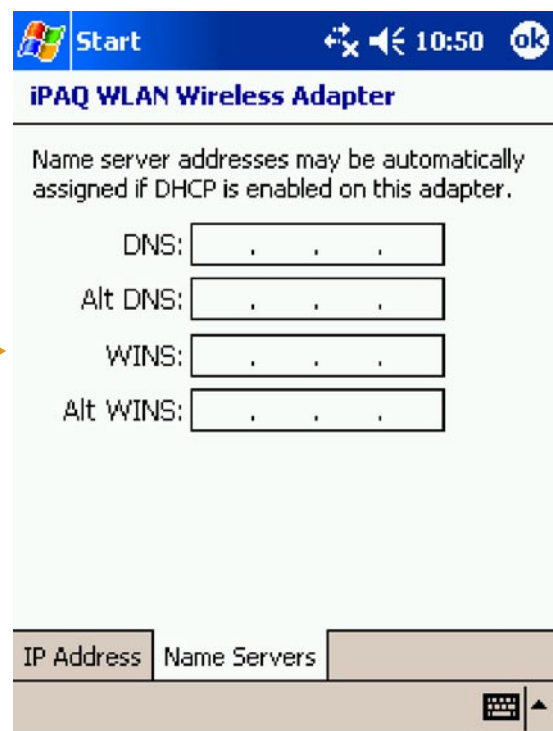
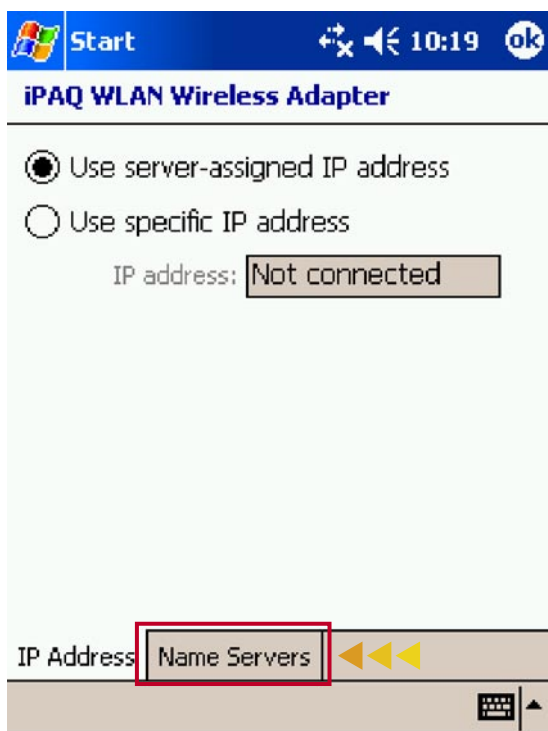
For Pocket PC Users

Version 1.0

Step 11 - Select "Use server-assigned IP address"

Step 12 - Tap "Name Servers"

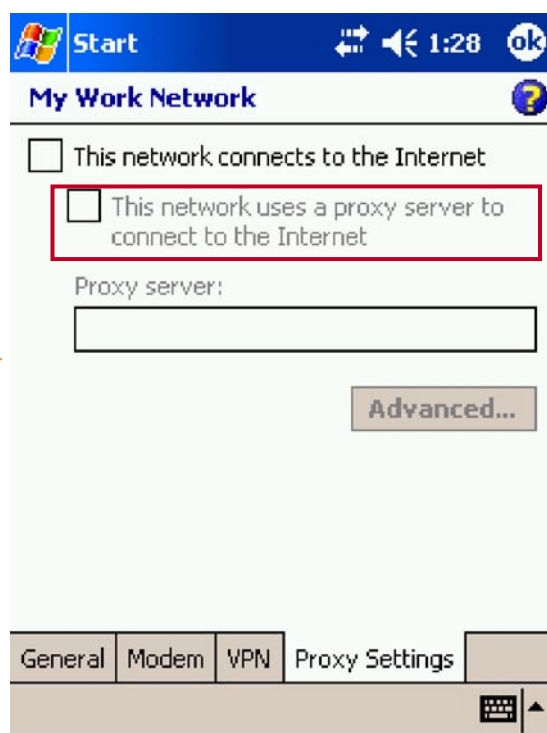
Step 13 - "iPAQ WLAN Wireless Adapter" will appear. Please make sure that all fields are empty.





## 1.2 Disable Proxy Server Setting

- ❏ *Step 1* - Tap **Start** to select **Settings**.
- ❏ *Step 2* - **Connections** ▶ **Connections** ▶ Select **Set up my proxy server**.
- ❏ *Step 3* - Uncheck the statement and make sure that the field of **Proxy Server** is empty.

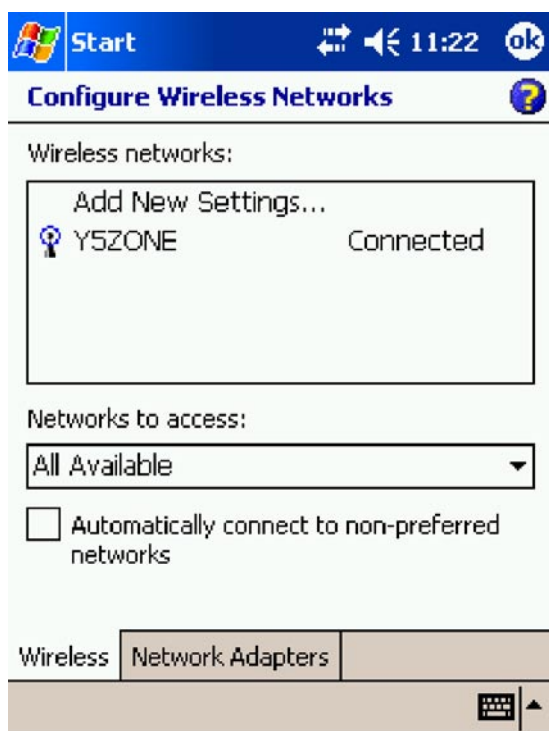


## Chapter 2 Start Using Y5ZONE at Hotspots

### 2.1 Select Wireless Network

- ❖ Step 1 - Refer to Step 1 – Step 4 mentioned in Section 1.1 Configure Wireless LAN Function.
- ❖ Step 2 Tap “**Y5ZONE**” and select “**Connect**”

The following page will be shown. It indicates that Y5ZONE network is now being connected.





## 2.2 Login Process

- ❖ *Step 1* - Tap "**Start**" to select "Internet Explorer" to launch the web browser and type in a valid Internet URL on the address field. You will be redirected to the Y5ZONE login page automatically.
- ❖ *Step 2* - Enter your login ID and password
- ❖ *Step 3* - Tap "**Submit**"





## 2.3 Login Status

### 2.3.1 Successful login

The URL previously typed as per the instruction of step 1 of 2.2 Login Process will be shown.

### 2.3.2 Login Failure

In case of login failure, an error message is displayed under the login box as shown below.



## Chapter 3 Finish Using Y5ZONE Service

- Step 1 - Type "http://hotspot.status.y5zone.net:8080/session.asp" at browser
- Step 2 - Tap the "Logout" button to logout

